

LAKE FACILITY

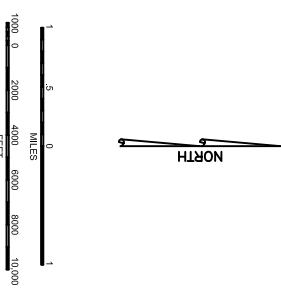
Lat: 32° 19' 4.0"N Long: 104° 00' 18.5"W



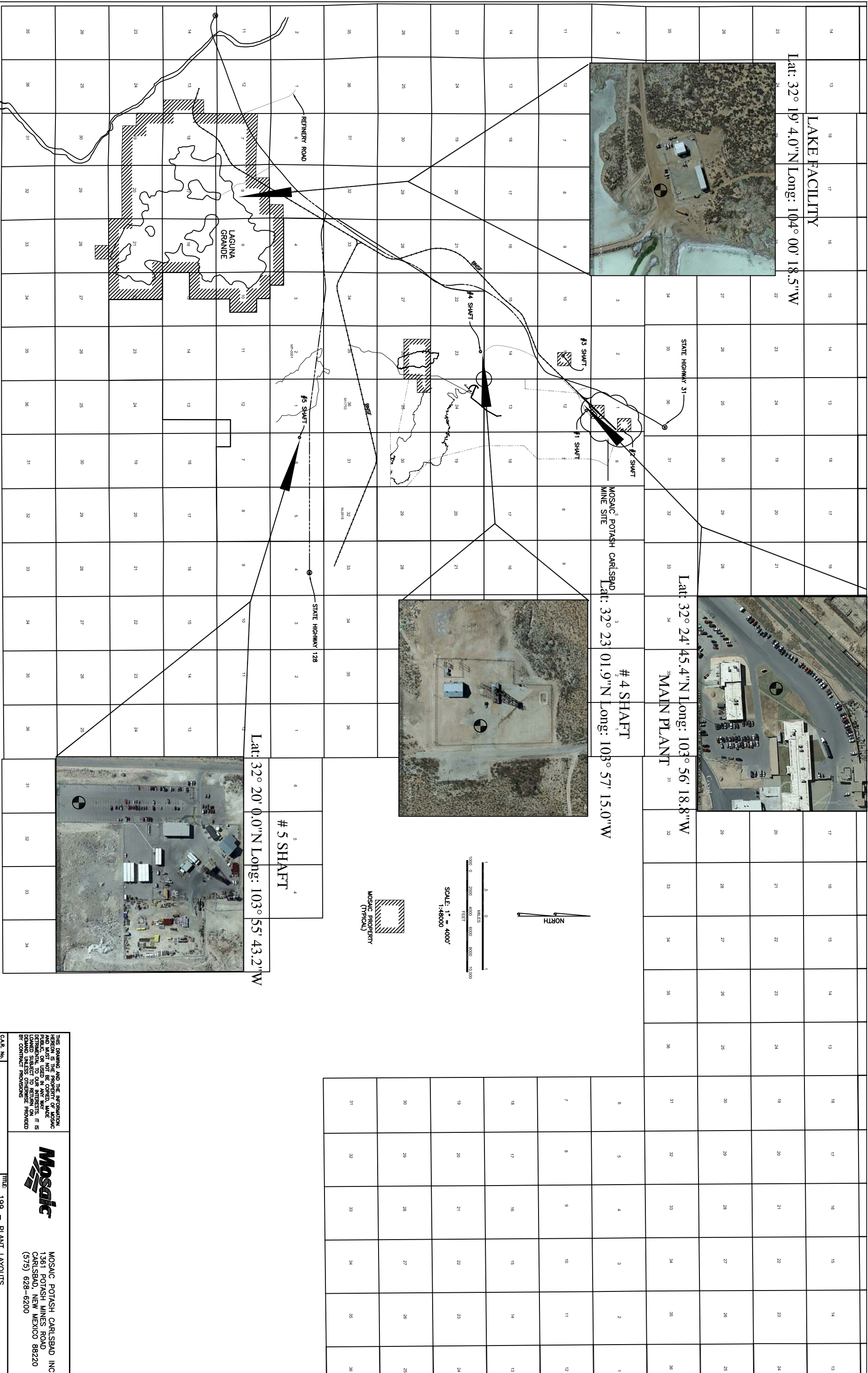
Lat: 32° 24' 45.4"N Long: 103° 56' 18.8"W
#4 SHAFT
MAIN PLANT



MOSAIC POTASH CARLSBAD MINE SITE
Lat: 32° 23' 01.9"N Long: 108° 57' 15.0"W



Lat: 32° 20' 0.0"N Long: 103° 55' 43.2"W



NUMBER		DESCRIPTION		DRAWINGS		NO.		DESCRIPTION		BY		DATE		BY		DATE	
2009-02-03		BIA SECTIONS				1		A		RF		9/8/2014					
		REVISIONS				2		A		RF		9/8/2014					
		REVISIONS				3		A		RF		9/8/2014					
		REVISIONS				4		A		RF		9/8/2014					

THIS DRAWING AND THE INFORMATION HEREON IS THE PROPERTY OF MOSAIC POTASH MINES INC. IT IS TO BE USED ONLY FOR THE PROJECT AND SITE SPECIFICALLY IDENTIFIED HEREIN. IT IS NOT TO BE REPRODUCED, COPIED, OR USED IN ANY WAY WITHOUT THE WRITTEN PERMISSION OF MOSAIC POTASH MINES INC. IN DEMAND UNLESS OTHERWISE PROVIDED BY CONTRACT PROVISIONS.



MOSAIC POTASH CARLSBAD INC
1361 POTASH MINES ROAD
CARLSBAD, NEW MEXICO 88220
(575) 628-6200

CAR. No. 1, 41
SUB. CODE 1, 41
DRAWN BY M.G.J.
9-28-12
CHECKED
APPROVED
SCALE 1" = 4000'

TITLE: 199 - PLANT LAYOUTS
U - SURVEY
MOSAIC PROPERTY BASE MAP
PROPOSED SHOREBIRD ACEC
DRAWING NO. 199-U-0001