

# Connecting to Wi-Fi with Windows 7

This is a guide for how to connect to the ITC provided Wi-Fi networks with a Windows 7 computer. The screenshots in this guide are from a version of Windows 7 with the “Windows Classic” look enabled, which makes Windows 7 resemble Windows XP. For that reason, the look of Windows 7 may be different on your computer, but all of the menus and options will function the same as those in the guide.

## Table of Contents

Getting started .....	2
Encrypted or unencrypted?.....	2
Connect to an encrypted wireless network.....	3
Connect to an unencrypted wireless network.....	8
Check your connection .....	11
Deauthenticating .....	12

## Getting started

If you are not currently connected to Wi-Fi, your Wi-Fi symbol (grey bars near the clock) will not be filled in. If you hover over them, a message will appear: *Not connected-Connections are available*.



If you click on those bars, a list of nearby Wi-Fi networks will appear.

## Encrypted or unencrypted?

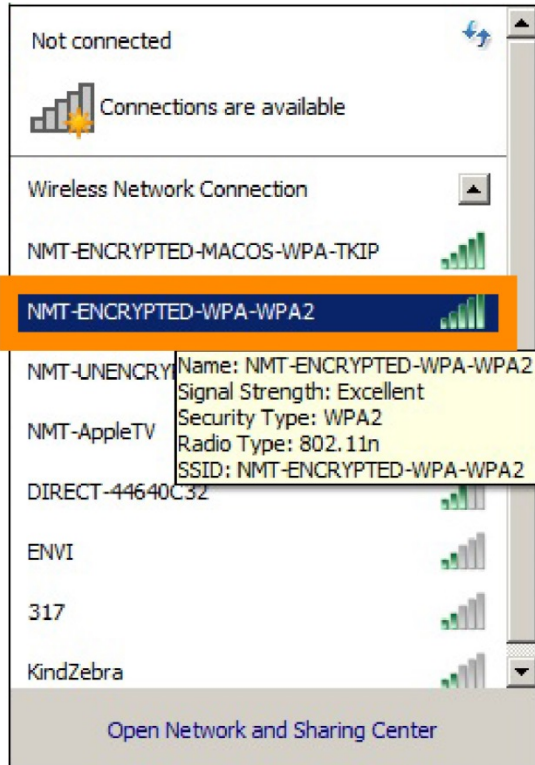
The main differences between the wireless networks are the encryption level and how often you need to re-authenticate (login).

The unencrypted wireless can be better when you need to login to the internet at one location for a short time and don't plan on moving around campus. The unencrypted wireless can also be useful when you are having issues connecting to the encrypted wireless. The encrypted wireless is better if you are planning to roam around campus for a while or use the wireless for more than a day or two.

That said, ITC recommends the use of encrypted wireless internet for an additional layer of internet security whenever possible. However, even while using the encrypted network you should be careful about submitting any personal information online.

## Connect to an encrypted wireless network

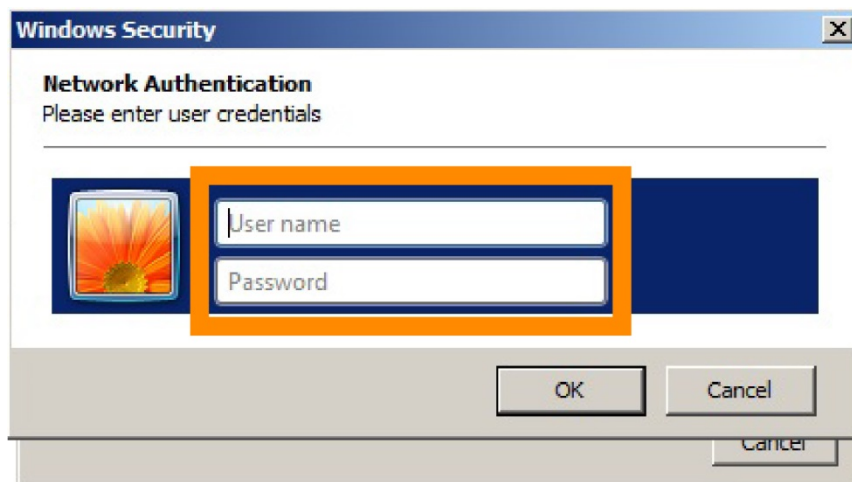
Choose one of the encrypted Wi-Fi networks--NMT-ENCRYPTED-WPA-WPA2, NMT-ENCRYPTED-MACOS-TKIP, OR NMT-Encrypted--and click on it. For the purposes of this guide, we will be using *NMT-ENCRYPTED-WPA-WPA2*.



You should then see an option to *Connect*. Click it.



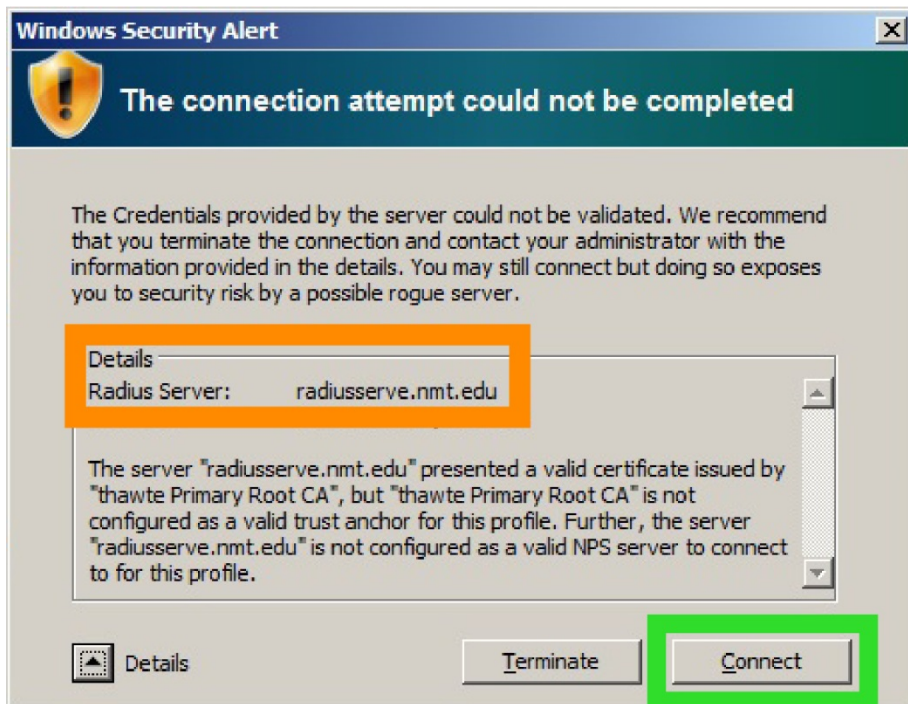
A login prompt will appear. Enter in your user credentials: 900# and Banweb password. This may need to be done multiple times in order for the credentials to take.



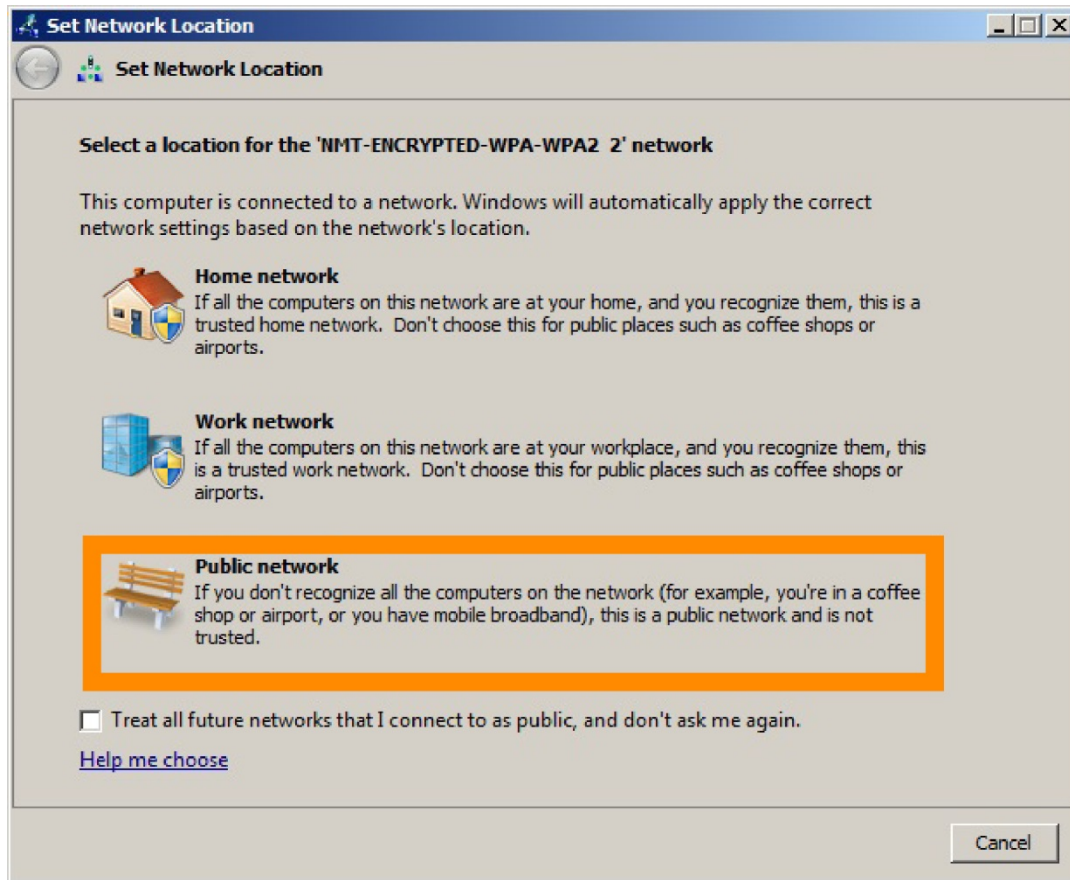
Assuming your credentials are correct, you will most likely see a Windows Security alert pop up. This is fairly normal. Click on *Details*.



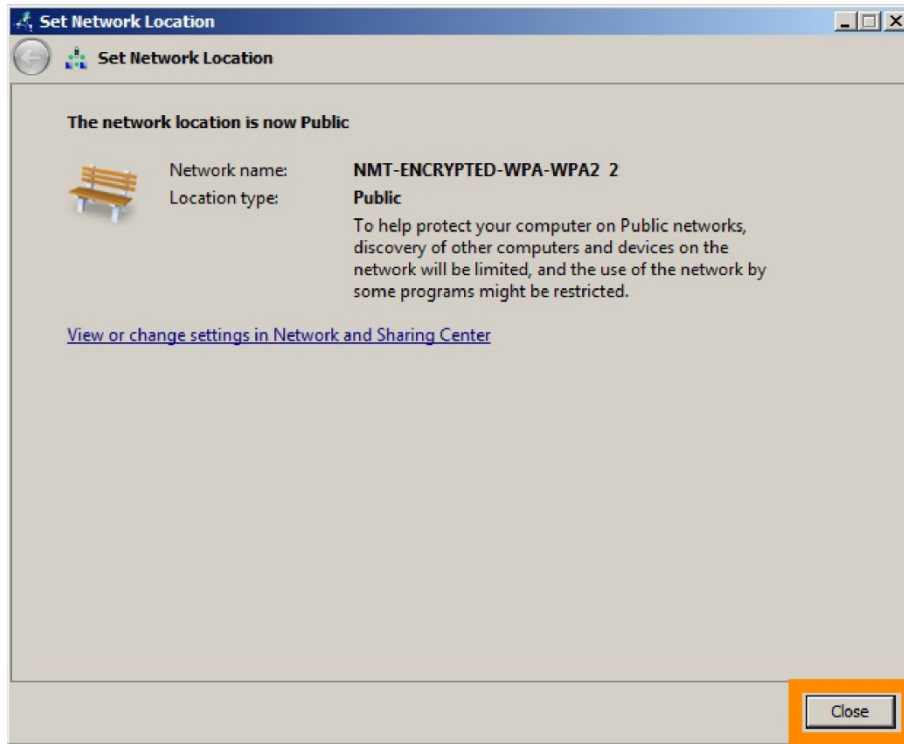
If the *Radius Server* is listed as either *radiusserve.nmt.edu* or *radiusserve2.nmt.edu*, then you can click *Connect* and continue connecting to the Wi-Fi.



Once your credentials are accepted you will see a window labeled *Set Network Location*. Click *Public network*.



Once you set the network as public, a confirmation window will appear, which you can close.

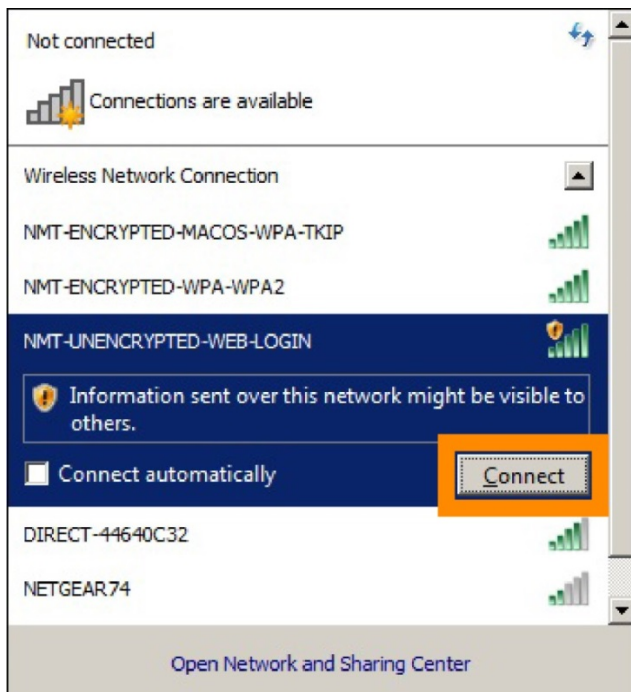


## Connect to an unencrypted wireless network

Choose one of the unencrypted Wi-Fi networks--NMT-UNENCRYPTED-WEB-LOGIN or NMT-Weblogin --and click on it. For the purposes of this guide, we will be using *NMT-UNENCRYPTED-WEB-LOGIN*.



You should then see an option to *Connect*. Click it.

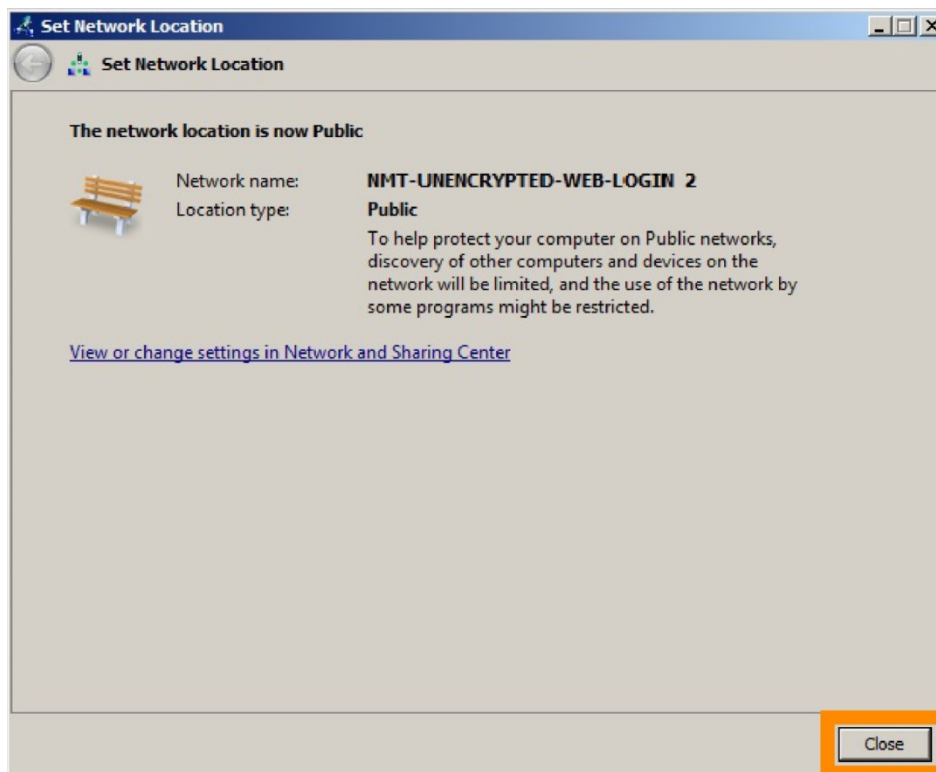




A window will appear labeled *Set Network Location*. Click *Public network*.



Once you set the network as public, a confirmation window will appear, which you can close.



Now go to your favorite web browser and try to visit to a webpage, like [www.nmt.edu](http://www.nmt.edu). You will instead be greeted with this login page for the unencrypted network. Enter in your 900# and Banweb password and click *Login*.

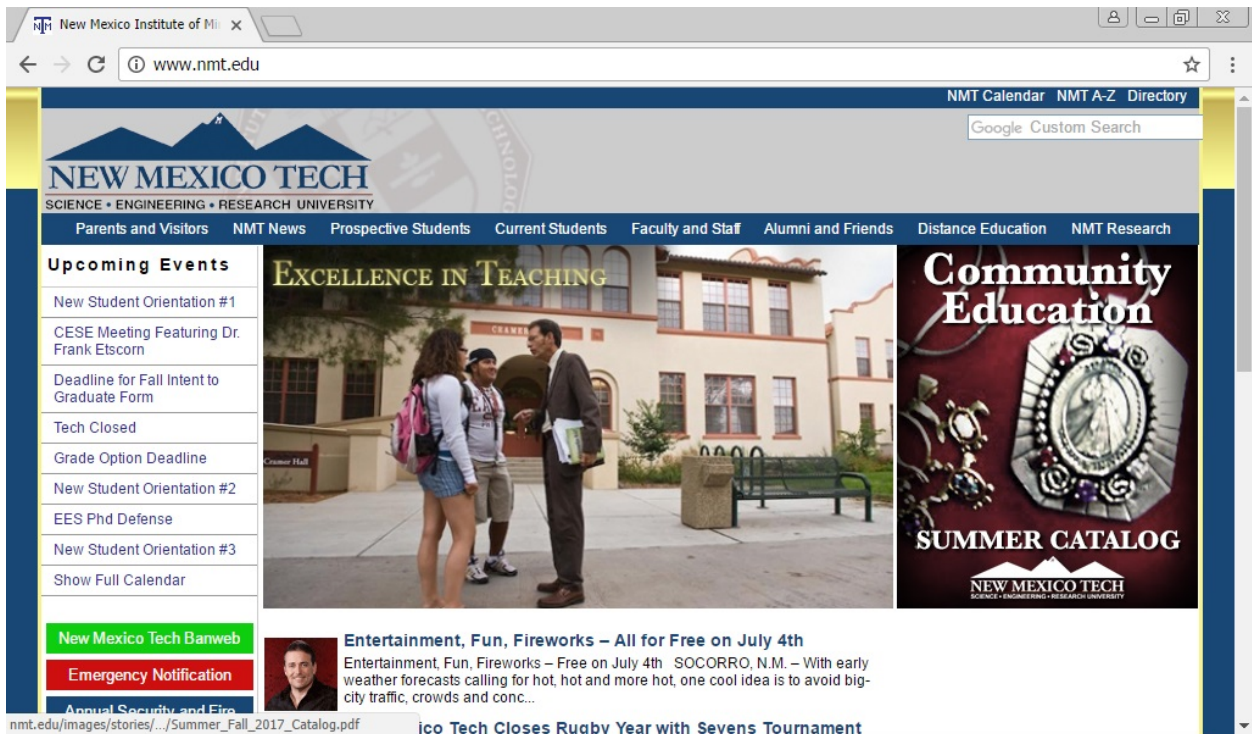
Assuming your credentials are correct, you will be directed to a page like this one. You should be connected to the unencrypted Wi-Fi at this time.

## Check your connection

If you are now connected to Wi-Fi, the Wi-Fi bars will fill in.



To double-check that you are connected, you can also try going to a website, like [www.nmt.edu](http://www.nmt.edu).



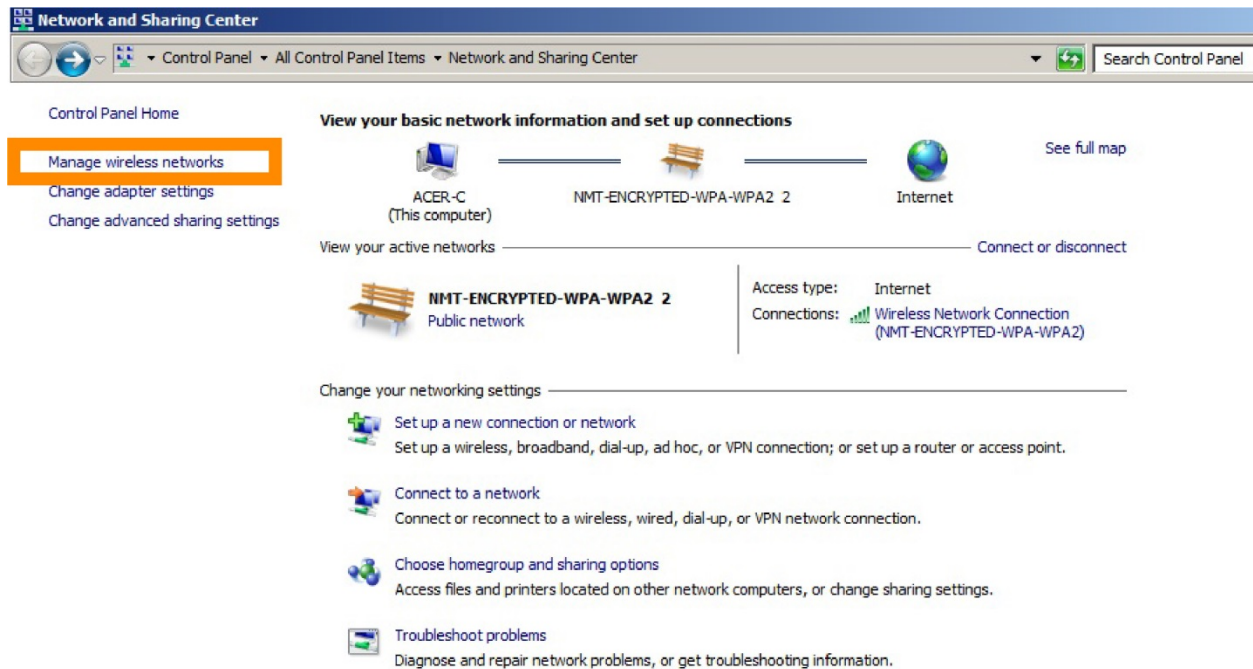
## Deauthenticating

Deauthenticating (also known as “forgetting” a network) can sometimes help if you are having trouble logging in to a network. Deauthenticating removes a network (and your username/password) from the list of known networks. If you attempt to connect to that network again after you’ve forgotten it, you will have to re-enter your login information.

First, open up the Wi-Fi list and click on *Open Network and Sharing Center*

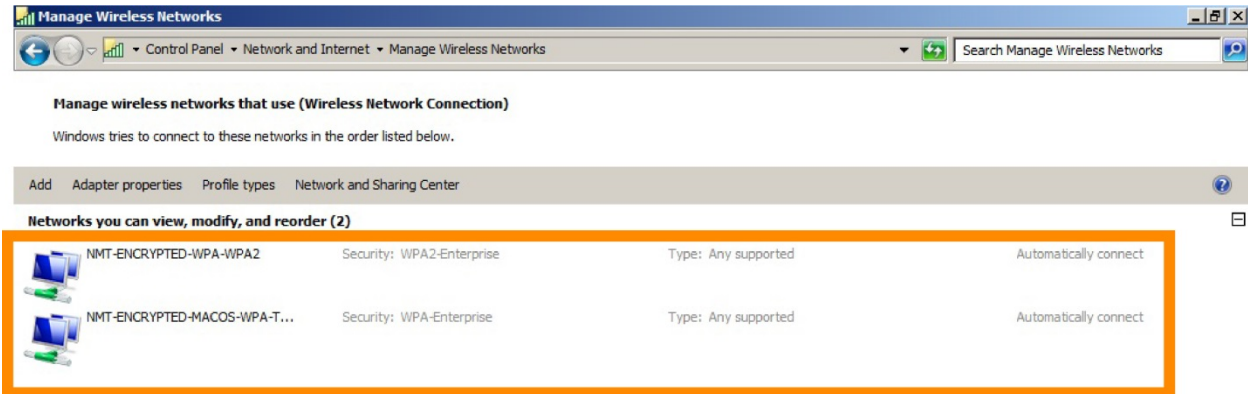


Then click on *Manage Known Networks*, near the top left-hand side of the page.

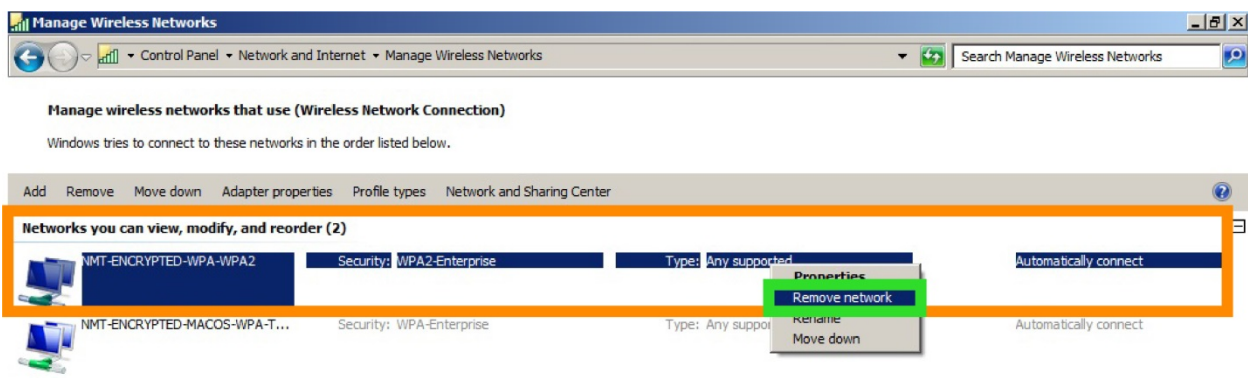




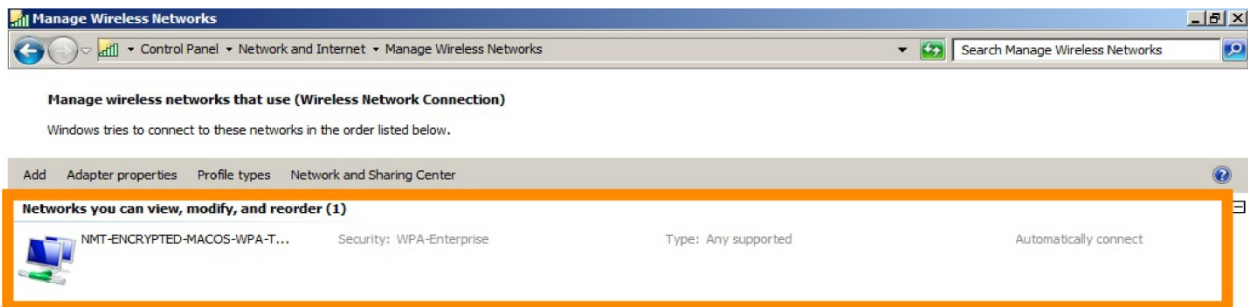
A list of networks known by your computer will appear. This includes networks you have connected to in the past, not necessarily all networks currently available.



In this case we will remove NMT-ENCRYPTED-WPA-WPA2. Right-click on the network name and hit *Remove network*.



The network will disappear from the list.



If you were to try to connect to the NMT-ENCRYPTED-WPA-WPA2 network again, you would see a login box appear and have to provide your username and password again.

